

FOR IMMEDIATE RELEASE

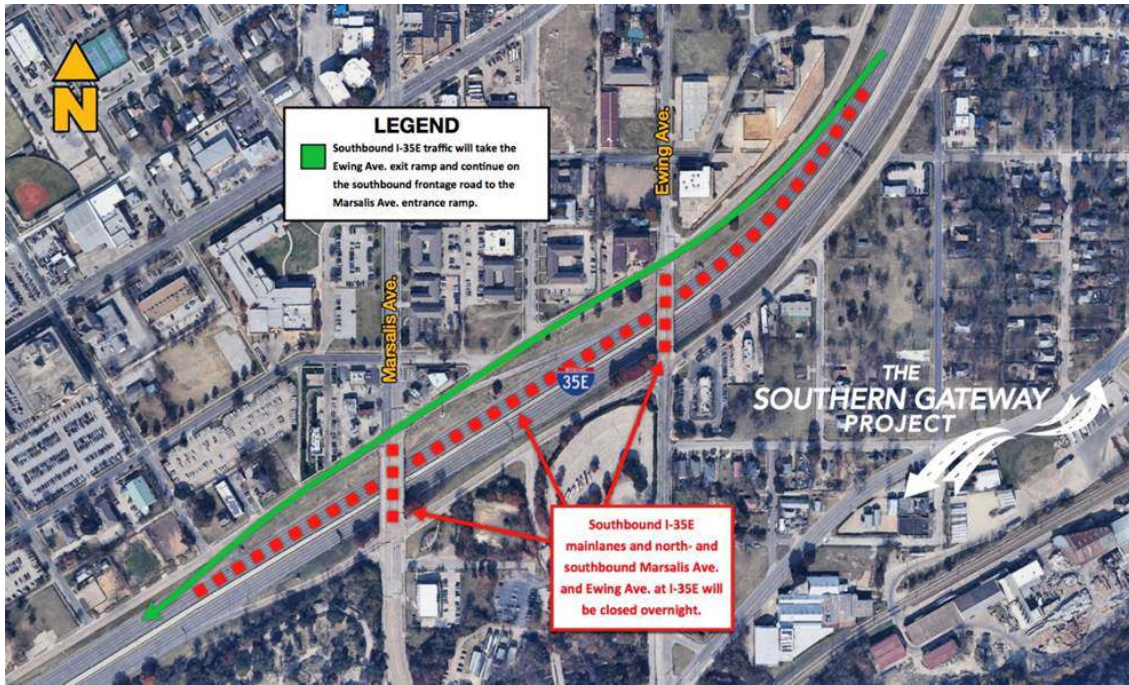
October 2, 2019

Weekend Overnight Full Closure of Interstate 35E between Ewing Avenue and Marsalis Avenue, October 4-6

DALLAS – Weekend overnight full closure of I-35E between Ewing Avenue and Marsalis Avenue.

All southbound I-35E lanes between Ewing Avenue and Marsalis Avenue and north- and southbound Ewing Avenue and Marsalis Avenue at I-35E, will be closed overnight from 10 p.m. Friday, Oct. 4 through 6 a.m. Saturday, Oct. 5.

During this closure, southbound I-35E traffic will take the Ewing Avenue exit ramp and continue on the southbound frontage road to the Marsalis Avenue entrance ramp.



All northbound I-35E lanes between Marsalis Avenue and Ewing Avenue and north- and southbound Marsalis Avenue and Ewing Avenue at I-35E, will be closed overnight from 9 p.m. Saturday, Oct. 5 through 6 a.m. Sunday, Oct. 6.

During this closure, northbound I-35E traffic will take the Marsalis Avenue exit ramp and continue on the northbound frontage road to the Ewing Avenue entrance ramp.





Closures are subject to change due to weather or other unforeseen circumstances.

The public can stay up-to-date on construction progress, lane closures and traffic changes by signing up for text alerts, sending the message “The Southern Gateway” to 31996.

Other methods to learn more about the project include:

- **The project website:** www.thesoutherngateway.org
- **Facebook:** www.facebook.com/TheSouthernGateway
- **Twitter:** www.twitter.com/DriveTSG
- **Sign up for E-Blasts:** <https://thesoutherngateway.org/signup-for-e-updates/>
- **Project Storefront:** 160 Continental Ave. Dallas, TX 75207



Copyright © 2019 The Southern Gateway. All rights reserved.

Danetta Harris

Public Involvement Manager

Phone: 214-599-9766

Email: dharris@kstrategies.com

The Southern Gateway Project

Phone: 214-349-6493

Email: info@thesoutherngateway.com